

ImageTool Software

ImageTool is integrated, automated data acquisition and device configuration software, for use with imaging systems for spectroscopic, aeronomic and astronomical observations.

ImageTool provides a software interface to control various hardware components within the system, from the camera to the etalon temperature controller to the network power control unit.

Features

- Controls CPI's filter wheel, pointing head, etalon pressure controller, and network power control unit
- Acquires images in a variety of acquisition modes: single frame, image sequence, and focus modes
- Defines "events" to configure the filter wheel, camera, and pointing head settings
- Ability to change cameras' settings remotely
- Schedules events and image acquisition
 - Customized data acquisition process
 - Experiment information is recorded in FITS image header
 - Saves images in FITS and JPEG file formats

Interface options

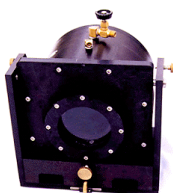
- Merrimack Series of products



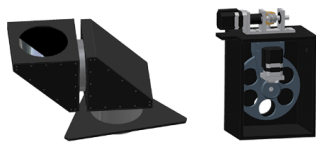
Lowell Fabry-Perot Interferometer



Middlesex Spectrograph

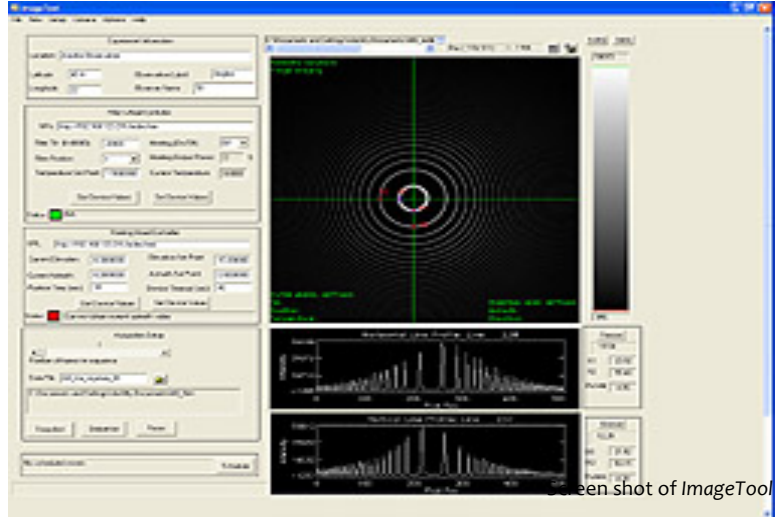


Walden All-Sky Imager



Pointing Head and Filter Wheel

- A variety CCD cameras, including Andor, Princeton Instruments, and Atik



Attributes

- *Flexible* - Using the framework of events, the data acquisition process can be customized based on the nature of the experiment or observation
- *Easy to use* - Create templates for data acquisition events that are used frequently
- *Precise Data Acquisition* - Centralized software control of all hardware components means tunable experiment parameters for optimal results
- *Detailed System Information* - All key experiment settings are recorded with the images in the image header, ensuring that all system parameters at the time of the experiment are available to calibrate, analyze and visualize image data
- *Control* - The ability to define events by controlling the hardware and acquiring data, allowing the user to pre-schedule data acquisition sessions

List of Services

- All instruments delivered complete
- All products use a common software, included
- Opportunities for training, service and maintenance arrangements, and software updates are available upon request